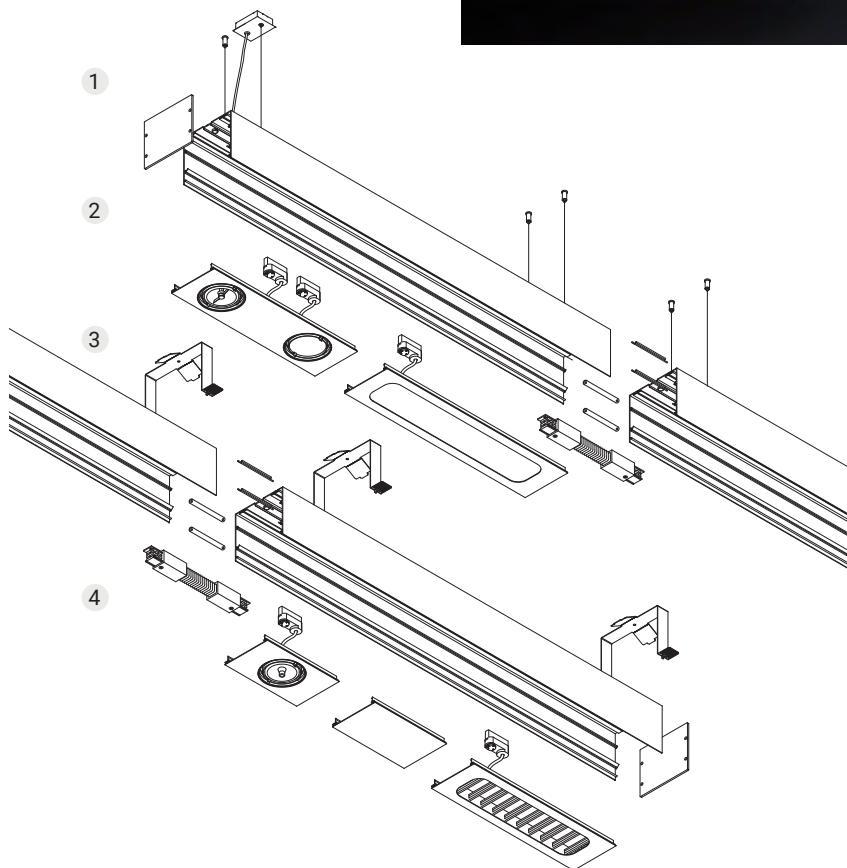


# Cosmos

COSMOS is a mixed structural system for spot and linear lighting. It is made of an extruded and lacquered aluminium profile housing. It can be installed suspended, recessed or ceiling mounted. The set is completed with fast installation lighting modules that enable the lighting properties of the installation to be changed at any point.

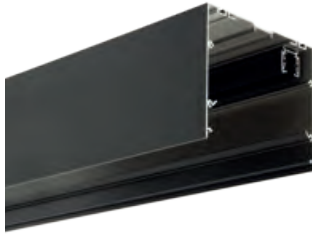


- 1 END CAPS**  
Sold separately, they include the terminals of electrified rail. In the recessed version, both caps come with ventilation holes.
- 2 EXTERNAL PROFILE**  
For all the possible configurations and available from 900mm up to 2400mm. Incorporates an electrified rail that guarantees the electrical continuity in all the pieces and with just one power connection.
- 3 INSTALLATION**  
Three options available: Suspended, surface mounted or ceiling recessed mounted. Once selected, all the necessary installation accessories will be assigned.
- 4 MODULES**  
Can be configured as projectors or fluorescent fittings, installed with clips that guarantee and simplify the mounting process. Electrical connection is made by means of an standard adapter.

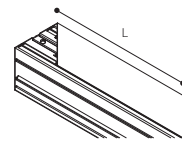
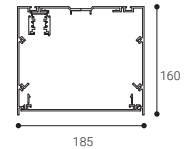
## Cosmos

Ceiling  
suspended  
mountedCeiling  
surface  
mountedCeiling  
recessed  
mounted

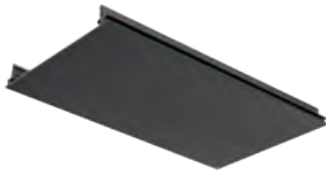
## EXTERNAL PROFILE



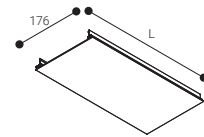
	L(mm)	COLOUR
CS3P0300B	300	○
CS3P0300N	300	●
CS3P0600B	600	○
CS3P0600N	600	●
CS3P0900B	900	○
CS3P0900N	900	●
CS3P1200B	1200	○
CS3P1200N	1200	●
CS3P1500B	1500	○
CS3P1500N	1500	●
CS3P1800B	1800	○
CS3P1800N	1800	●
CS3P2100B	2100	○
CS3P2100N	2100	●
CS3P2400B	2400	○
CS3P2400N	2400	●



## BLANK MODULES



	L(mm)	COLOUR
CS3T0300B	300	○
CS3T0300N	300	●
CS3T0600B	600	○
CS3T0600N	600	●
CS3T0900B	900	○
CS3T0900N	900	●
CS3T1200B	1200	○
CS3T1200N	1200	●
CS3T1500B	1500	○
CS3T1500N	1500	●



○ RAL9016  
● RAL9005

# Cosmos

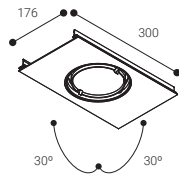


IP  
**20**

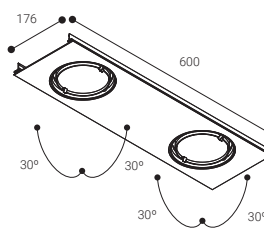
UGR  
**19**

Expectancy  
**60000 h.**  
L70B10

CSP1

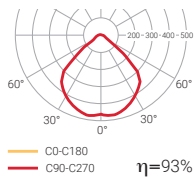


CSP2



○ RAL9016  
● RAL9005

Transparent diffuser



**!** DALI REGULATION  
AVAILABLE

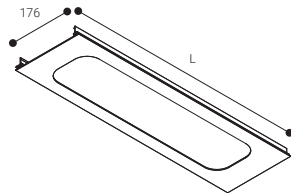
	W	K	LUMEN	COLOUR	
CSP123FB	1x11,8W	3000	1930 lm	○	1,2
CSP123FN	1x11,8W	3000	1930 lm	●	1,2
CSP124FB	1x11,8W	4000	2050 lm	○	1,2
CSP124FN	1x11,8W	4000	2050 lm	●	1,2
CSP223FB	1x11,8W	3000	3860 lm	○	2,4
CSP223FN	1x11,8W	3000	3860 lm	●	2,4
CSP224FB	1x11,8W	4000	4100 lm	○	2,4
CSP224FN	1x11,8W	4000	4100 lm	●	2,4



IP  
**20**

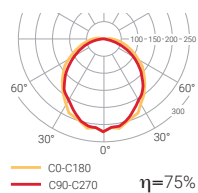
UGR  
**22**

Expectancy  
**72000 h.**  
L70B10



○ RAL9016  
● RAL9005

Opal diffuser

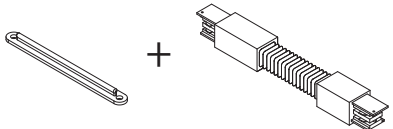


	W	K	LUMEN	COLOUR	
CSS230B	1x26,8W	3000	3040 lm	○	2,4
CSS230N	1x26,8W	3000	3040 lm	●	2,4
CSS240B	1x26,8W	4000	3360 lm	○	2,4
CSS240N	1x26,8W	4000	3360 lm	●	2,4
CSS430B	1x53,6W	3000	6080 lm	○	3,2
CSS430N	1x53,6W	3000	6080 lm	●	3,2
CSS440B	1x53,6W	4000	6720 lm	○	3,2
CSS440N	1x53,6W	4000	6720 lm	●	3,2

## Cosmos

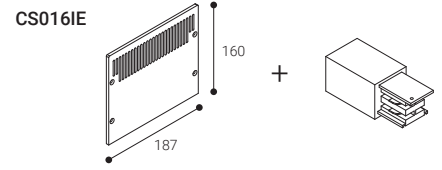
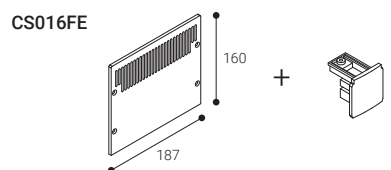
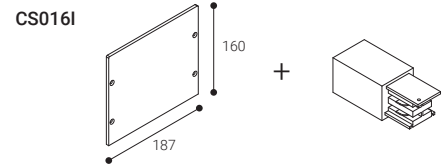
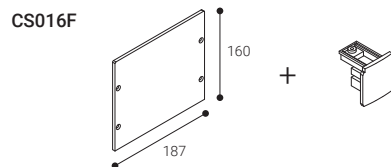
## ACCESSORIES

## Joining accessory

	COLOUR	
CS014B	○	
CS014N	●	

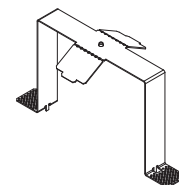
## Cover

	COLOUR	
CS016FB	○	end cap
CS016FN	●	end cap
CS016FEB	○	end recessed
CS016FEN	●	end recessed
CS016IB	○	starting cap
CS016IN	●	starting cap
CS016IEB	○	recessed starting cap
CS016IEN	●	recessed starting cap



## Recessed accessory

	L (mm)
CS0312	600 a 900
CS0313	1200 a 1500
CS0314	1800 a 2100



## Suspension accessory

	L (m)	COLOUR
CS1029L2	2	
CS1029L2AB	2	○ with mains connection box
CS1029L2AN	2	● with mains connection box

