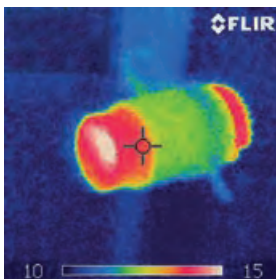




# Prolit



**!** Please, ask for the technical datasheets of all the luminaires.

The PROLIT projectors stand out thanks to their versatility and the fact that they can be installed in an electric track or mounted on the wall or in the ceiling. The head and the body are made of aluminium injection with a minimalist design. The entire set is lacquered with an epoxy-polyester paint with two different finishes: white or black.

## Prolit

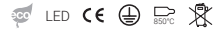
Installation	Ceiling surface mounted Electrified track
Diffuser	<input type="radio"/>
Light source	LED
Photobiological safety	0
UGR	19
CRI	>80
MacAdam ellipse	3
Beam angle range	32
Power range (W)	11,8-19,4
Colour temperature (°K)	3000   4000
Light range	1930-2850
Power factor	0,95
Efficiency (%)	92,2
Expectancy	60000 h L70B10
DALI Option	<input checked="" type="checkbox"/>
Continuous function 24h	<input checked="" type="checkbox"/>
IP	20
Class	I - II

Without diffuser

**!** For other CRI values, please contact us.

Fitting integrated in the electrified rail adapter

# Prolit



IP 20    CRI >80    UGR 19    32°

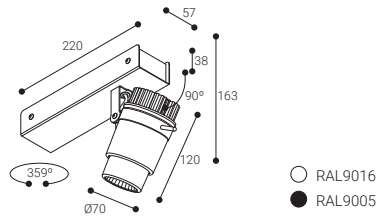
Expectancy **60000 h.**  
L70B10

Efficiency (%) **92,2**

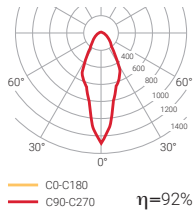
Photobiological safety

RG0	<b>0</b> Risk free
RG1*	Low risk
RG2	Moderate risk
RG3	High risk

\*Time under 3 h.



Intensive optics



	W	K	LUMEN	Beam Angle	COLOUR	Beam Spread
PRA23SB	1x11,8W	3000	1930 lm	32°	○	1,1
PRA23SN	1x11,8W	3000	1930 lm	32°	●	1,1
PRA24SB	1x11,8W	4000	2050 lm	32°	○	1,1
PRA24SN	1x11,8W	4000	2050 lm	32°	●	1,1
PRA33SB	1x17,4W	3000	2650 lm	32°	○	1,1
PRA33SN	1x17,4W	3000	2650 lm	32°	●	1,1
PRA34SB	1x17,4W	4000	2850 lm	32°	○	1,1
PRA34SN	1x17,4W	4000	2850 lm	32°	●	1,1

# Prolit



Electrified track



IP  
**20**

CRI  
**>80**

UGR  
**19**

**32°**

Expectancy  
**60000 h.**  
L70B10

Efficiency (%)  
**92,2**

Photobiological safety

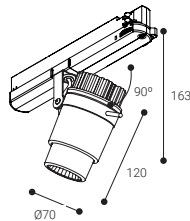
RG0	<b>0</b> Risk free
RG1*	Low risk
RG2	Moderate risk
RG3	High risk

\*Time under 3 h.

Intensive

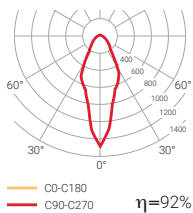


32°



○ RAL9016  
● RAL9005

Intensive optics



	W	K	LUMEN		COLOUR	
<b>PRS23SB</b>	1x11,8W	3000	1930 lm	32°	○	1,1
<b>PRS23SN</b>	1x11,8W	3000	1930 lm	32°	●	1,1
<b>PRS24SB</b>	1x11,8W	4000	2050 lm	32°	○	1,1
<b>PRS24SN</b>	1x11,8W	4000	2050 lm	32°	●	1,1
<b>PRS33SB</b>	1x19,4W	3000	2650 lm	32°	○	1,1
<b>PRS33SN</b>	1x19,4W	3000	2650 lm	32°	●	1,1
<b>PRS34SB</b>	1x17,4W	4000	2850 lm	32°	○	1,1
<b>PRS34SN</b>	1x17,4W	4000	2850 lm	32°	●	1,1



Compatible with **NormaLINK**

	W	K	LUMEN		COLOUR	
<b>PRS23DSB</b>	1x11,8W	3000	1930 lm	32°	○	1,1
<b>PRS23DSN</b>	1x11,8W	3000	1930 lm	32°	●	1,1
<b>PRS24DSB</b>	1x11,8W	4000	2050 lm	32°	○	1,1
<b>PRS24DSN</b>	1x11,8W	4000	2050 lm	32°	●	1,1
<b>PRS33DSB</b>	1x19,4W	3000	2650 lm	32°	○	1,1
<b>PRS33DSN</b>	1x19,4W	3000	2650 lm	32°	●	1,1
<b>PRS34DSB</b>	1x17,4W	4000	2850 lm	32°	○	1,1
<b>PRS34DSN</b>	1x17,4W	4000	2850 lm	32°	●	1,1